

Supporting Climate Justice from Space-Borne observations on a warming planet.

Gregory S. Jenkins, Professor

Department of Meteorology and Atmospheric Sciences

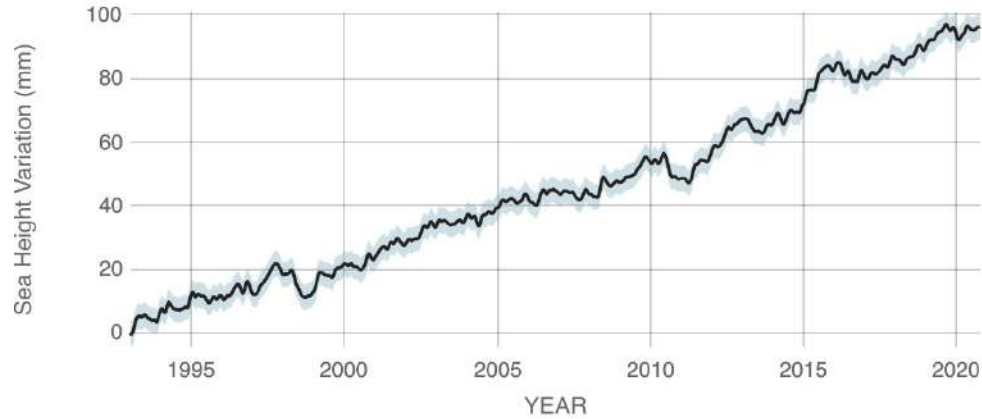
Alliance for Education, Science, Engineering and Design with Africa (AESEDA)



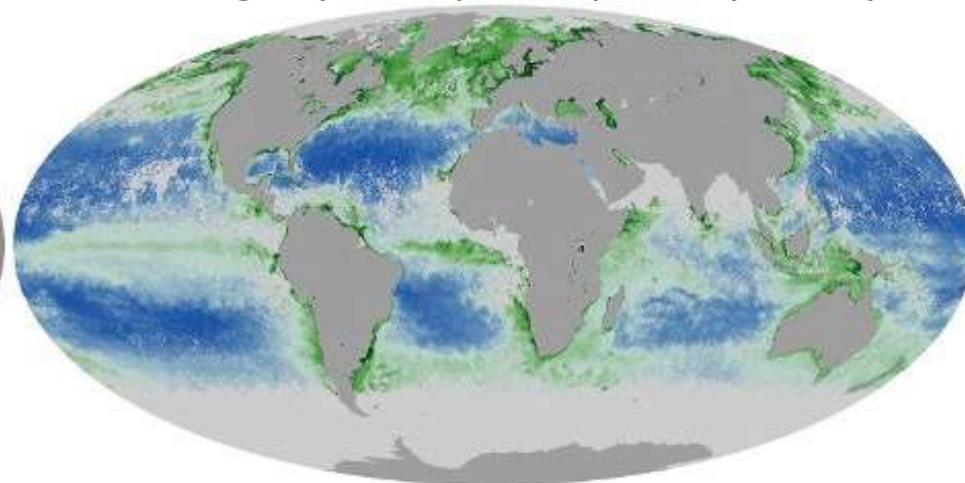
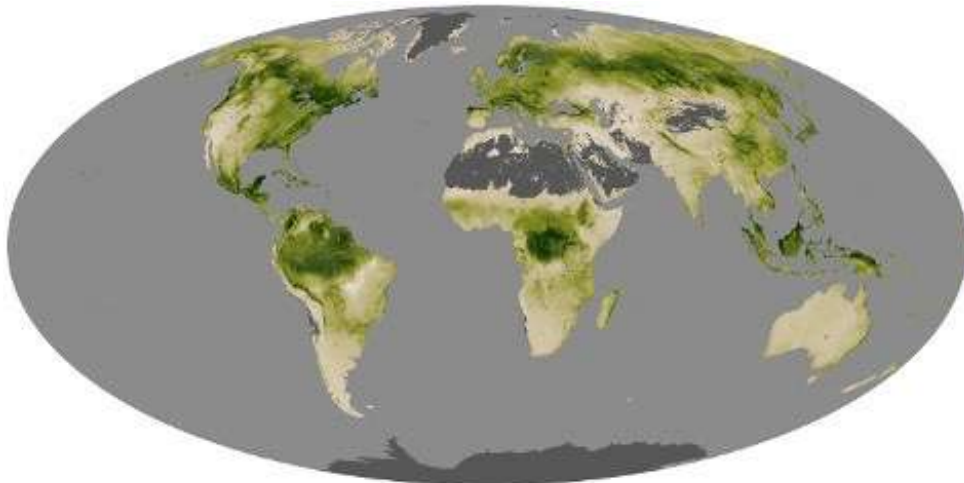
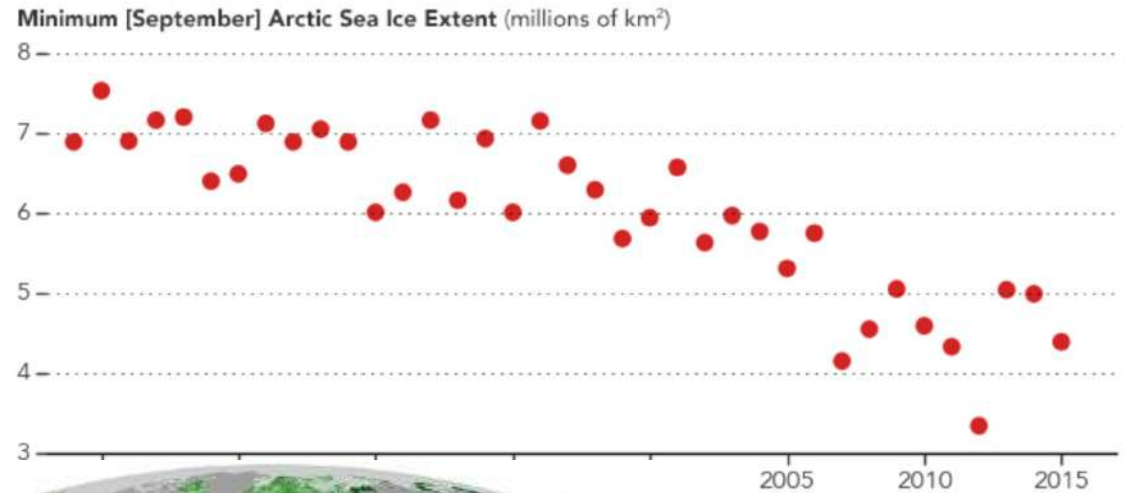
PennState



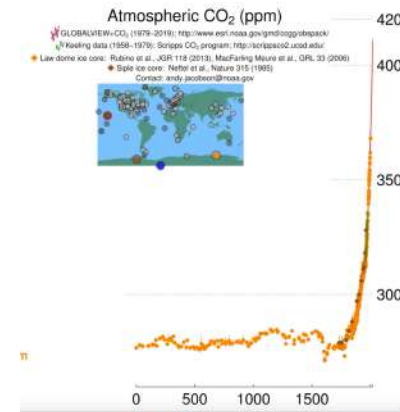
Monitoring the biosphere, cryosphere, oceans and atmosphere from Space is a requirement



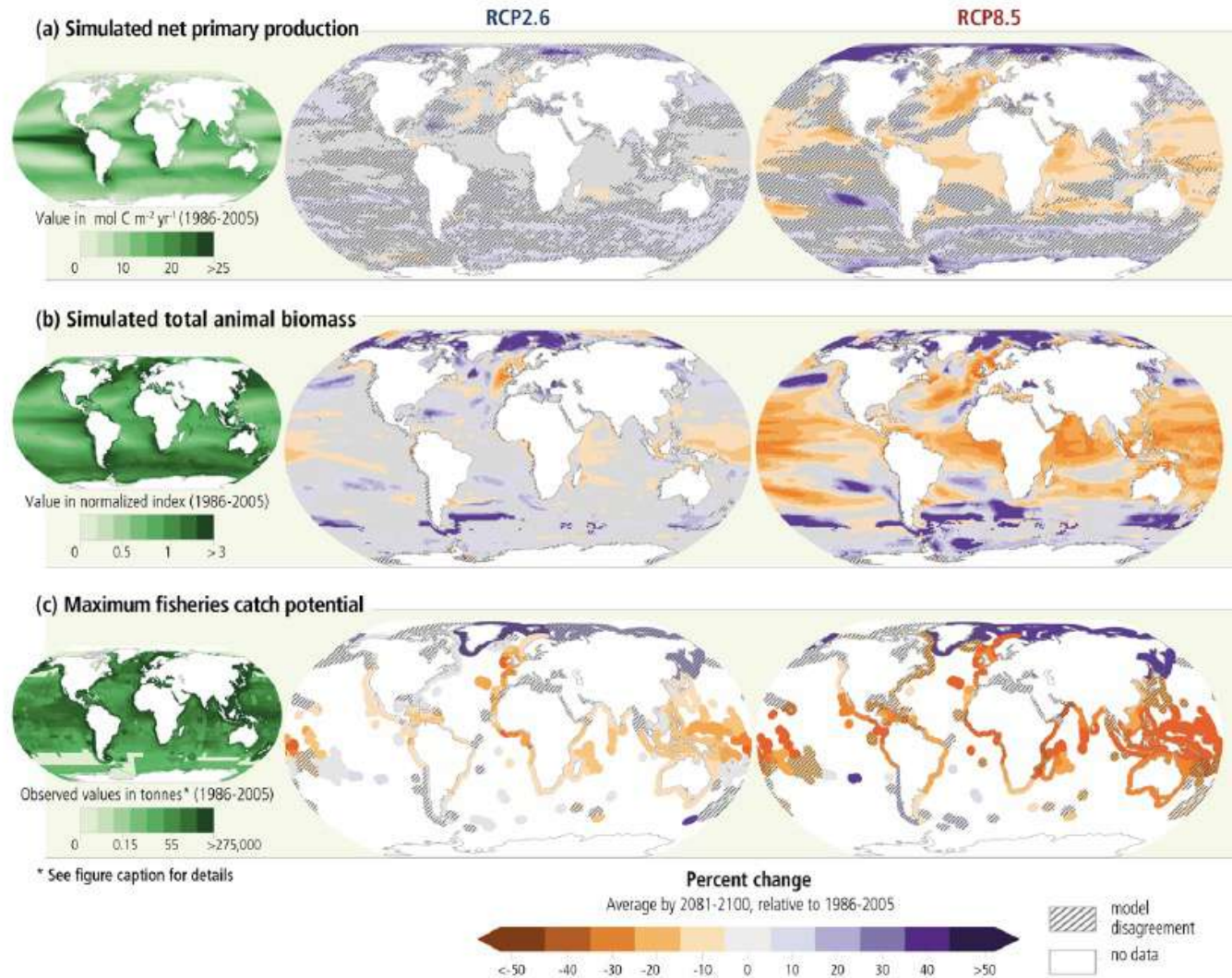
Source: climate.nasa.gov



July 2002



Satellites are needed to evaluate and improve future projection and guide policy



Spaceborne observations of multiple hazards in a warming World in 2020-2021 during a pandemic

USA Sept 2020

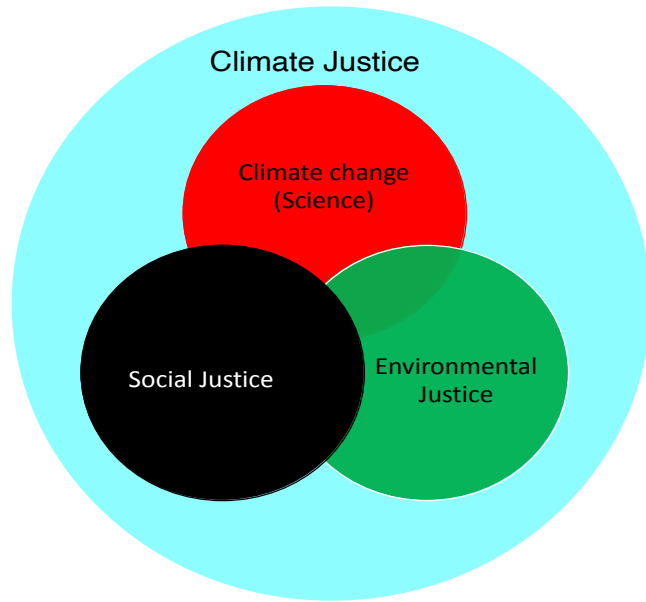


Dakar, Senegal

Feb 18, 2021



How do we connect Space borne science and data to Climate Justice?



Environmental justice is the disproportionate impact of environmental hazards on people of color.

